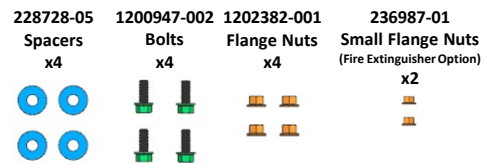
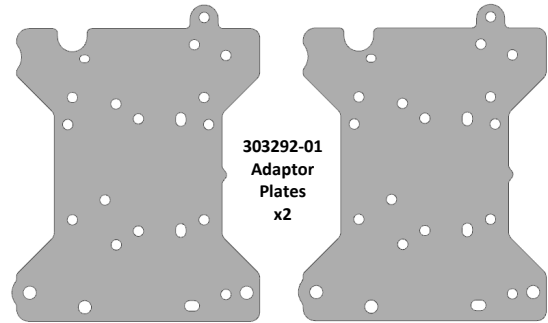


TRUCK-TOUGH® ADAPTOR PLATES SK-1685

KIT CONTENTS:



303292-01
Adaptor
Plates
x2

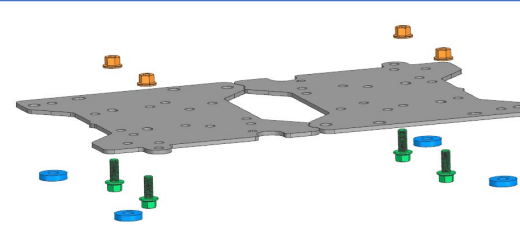


INSTRUCTIONS:

1. Locate the Truck Make Configuration and Seat Model on this diagram.
2. Note: Plates must be installed onto seat first.
3. Locate the proper mounting holes in the Seat Base.
4. With the Seat lying on its back, ensure the Plates are in the correct orientation and install the Bolts through the corresponding holes from the bottom up.
5. Torque each fastener 20lbs ft. +/- 2. (27Nm +/- 3)
6. Spacers are provided to place in-between the plates and floor mounting holes (If required).
7. Torque fasteners and adjust tether lengths to factory specifications. **New floor mounting hardware and floor tethers are always recommended. See Disclaimer below.*

Disclaimer: By choosing to install this kit, you are taking full responsibility of it's proper installation. As with all aftermarket seat installs, correct fastener, torque values, and tether lengths are vital to the seat's operation and safety of the Driver. Refer to the OE's service manual for more info.

= Cab Floor Mounting Holes
 = National Mounting Holes
 = Bostrom Mounting Holes



VOLVO VNR, VNL

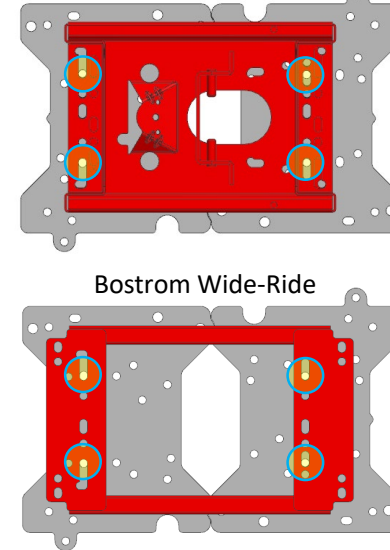
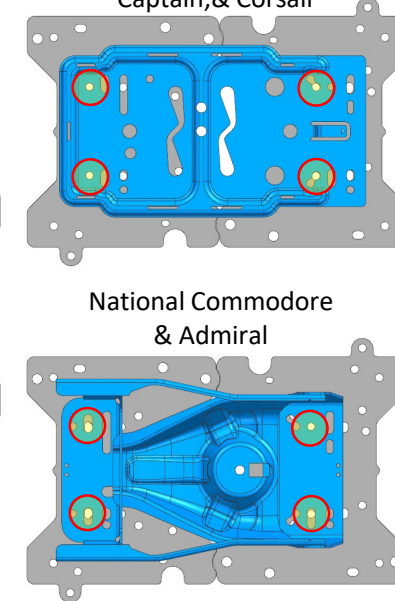
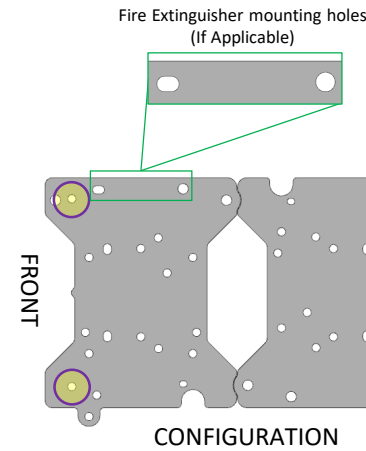
National Ensign,
Captain,& Corsair

Bostrom T-Series

Bostrom Pro-Ride

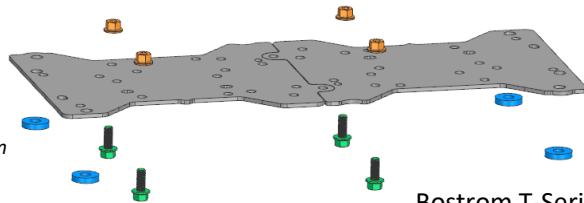
National Commodore
& Admiral

Bostrom Wide-Ride



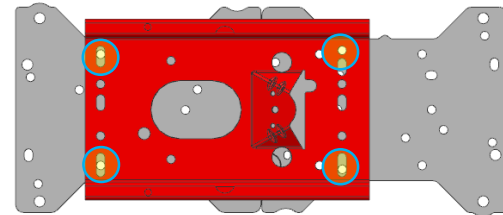
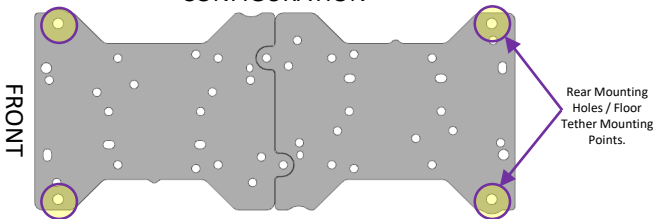
- PETERBILT 579, 589
- KENWORTH T680, T880

* Floor Tethers are required for this configuration. 6205011-001 Seat Belt Extension & Tether Kit may be required when replacing a Non-tethered OE Seat.



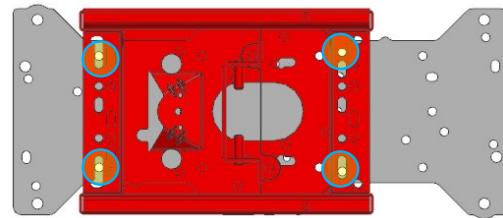
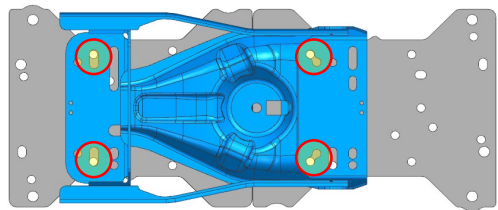
CONFIGURATION

Bostrom T-Series



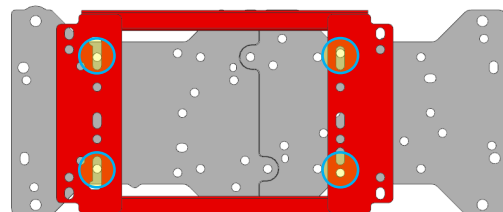
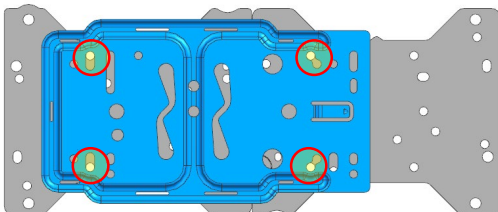
National Commodore & Admiral

Bostrom Pro-Ride



National Ensign, Captain,& Corsair

Bostrom Wide-Ride



- INTERNATIONAL PRO STAR, LONE STAR, LT,

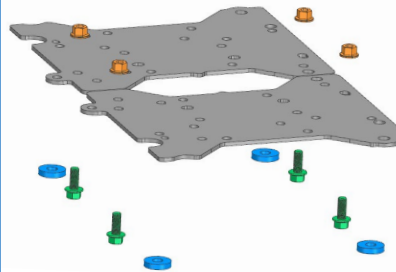
National Ensign,
Captain,& Corsair

Bostrom T-Series

Bostrom Pro-Ride

National Commodore
& Admiral

Bostrom Wide-Ride



FRONT

CONFIGURATION

